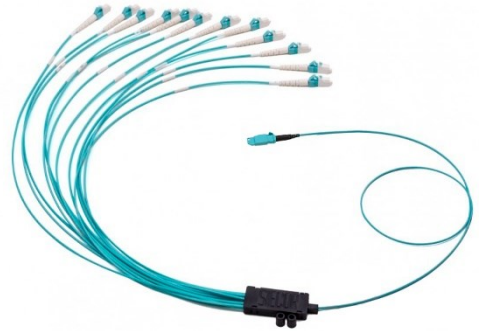


01x MXC - 12x LC PC 2,0mm 12F ROUND FANOUT

Basic characteristics

- ▲ Compact and small footprint receptacle on card-edge
- ▲ Debris insensitivity of back-plane connection



Benefits

- ▲ High density card-edge interface
- ▲ Low profile design

Applications

- ▲ High-speed computing
- ▲ Testing of individual fiber optic channels

Temperature range

Indoor controlled environment (-10°C/+60°C)

Cable parameters

Jacket material	LSZH	
Cable construction	Round cable	
Outer diameter	3,0mm	
Fiber count	12	
Fiber type	MMF OM3/OM4	
Temperature range	operation:	-10°C to +70°C
	storage:	-25°C to +70°C
	installation:	-5°C to +50°C
CPR	Cca-s1a, d1, a2	

01x MXC - 12x LC PC 2,0mm 12F ROUND FANOUT

Connector parameters

	MXC	LC MM
Compliance	US CONEC standard	Telcordia GR-326
Colour of housing	Aqua	Aqua/Magenta
Colour of boot	Black	White
Polish	N/A	Flat (PC)
IL (IEC 61300-3-4 method B)	<0,6dB (@850nm)	<0,25dB (@850nm)
IL (IEC 61300-3-4 method D) ONLY RECEPTACLE	<0,85dB (@850nm)	N/A
RL (IEC 61300-3-6)	>25dB (@850nm)	>30dB (@850nm)
RL (IEC 61300-3-4 method D) ONLY RECEPTACLE	>23dB (@850nm)	N/A

Identification

Marking sleeve with unique serial number.

Packaging

Each assembly in sealed PE bag, bulk pack in cardboard box.

MXC is a registered trademark of US Conec, Ltd.
 * Specifications are subject to change without notice

For more information contact our sales team at sales@sylex.sk