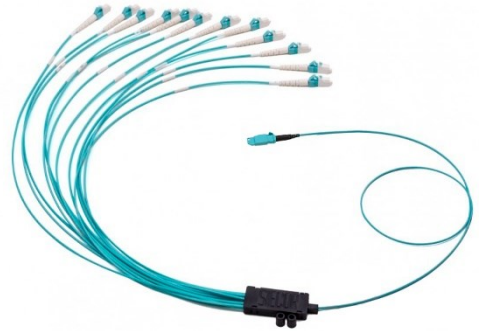


## 01x MXC - 16x LC PC 2,0mm 16F ROUND FANOUT

### Basic characteristics

- ▲ Compact and small footprint receptacle on card-edge
- ▲ Debris insensitivity of back-plane connection



### Benefits

- ▲ High density card-edge interface
- ▲ Low profile design

### Applications

- ▲ High-speed computing
- ▲ Testing of individual fiber optic channels

### Temperature range

Indoor controlled environment (-10°C/+60°C)

### Cable parameters

Jacket material		OFNP
Cable construction		Round cable
Outer diameter		3,0mm
Fiber count		16
Fiber type		MMF OM3/OM4
Temperature range	operation:	-20°C to +70°C
	storage:	-40°C to +70°C
	installation:	0°C to +70°C

## 01x MXC - 16x LC PC 2,0mm 16F ROUND FANOUT

### Connector parameters

	MXC	LC MM
Compliance	US CONEC standard	Telcordia GR-326
Colour of housing	Aqua	Aqua/Magenta
Colour of boot	Black	White
Polish	N/A	Flat (PC)
IL (IEC 61300-3-4 method B)	<0,6dB (@850nm)	<0,25dB (@850nm)
IL (IEC 61300-3-4 method D) ONLY RECEPTACLE	<0,85dB (@850nm)	N/A
RL (IEC 61300-3-6)	>25dB (@850nm)	>30dB (@850nm)
RL (IEC 61300-3-4 method D) ONLY RECEPTACLE	>23dB (@850nm)	N/A

### Identification

Marking sleeve with unique serial number.

### Packaging

Each assembly in sealed PE bag, bulk pack in cardboard box.

MXC is a registered trademark of US Conec, Ltd.  
 \* Specifications are subject to change without notice

For more information contact our sales team at [sales@sylex.sk](mailto:sales@sylex.sk)