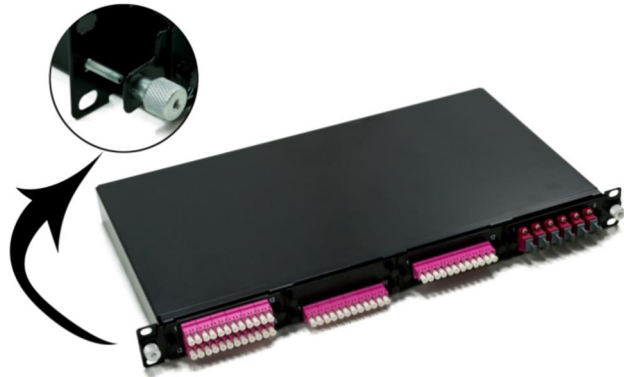


1U 19" panel, 4 module capacity

Basic characteristics

- ▲ Width 19"
- ▲ Height 1U
- ▲ Max. capacity 96 connections:
 - 4x 24-fiber modules or
 - 8x12-fiber half-size modules (both with LC connectors)



Benefits

- ▲ Modular solution
- ▲ Possibility to use for direct patching of extension MTP cables using frontplates with MTP adapters

Applications

- ▲ DataCenter cabling

Temperature range

Controlled environment (-10°C /+60°C)

Parameters

Dimensions	482 x 251 x 44 mm (1U)
Material	painting steel
Colour	deep black RAL9005
Capacity	4 standard size modules

Identification

Label with unique serial number.

Packaging

Each panel in cardboard box, bulk pack in master cardboard box/on palette.

* Specifications are subject to change without notice

For more information contact our sales team at sales@sylex