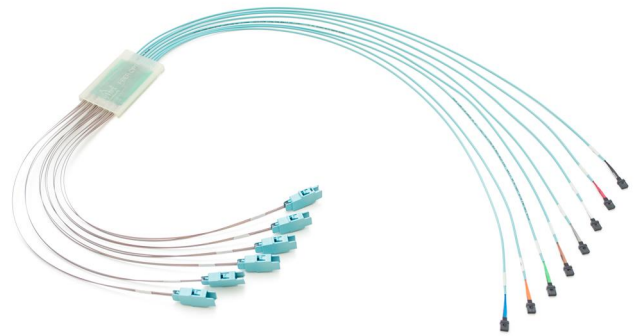


Compact Shuffle Cross-Connect 96F

Basic characteristics

- ▲ Compact shuffle box size
- ▲ Hermaphroditic PRIZM MT ferrule
- ▲ Debris insensitivity of MXC plug connector



Benefits

- ▲ High density parallel connector
- ▲ Debris insensitivity of MXC plug connector

Applications

- ▲ Supercomputing
- ▲ Data Networking
- ▲ SAN

Temperature range

Controlled environment (-10°C/+60°C)

Cable parameters

Jacket material	OFNG-LS
Cable construction	Bare ribbon
Outer diameter	approx. 2mm
Fiber count	96
Fiber type	MMF OM3

Connector parameters

	MT ferrule	MXC
Compliance	US CONEC standard	US CONEC standard
Colour of housing	N/A	Aqua
Colour of boot	N/A	N/A
Polish	Flat (PC)	N/A
Insertion Loss (@850nm)	<1,7dB per channel	

Identification

Label with unique serial number.

Packaging

Each assembly in antistatic bag, bulk pack in cardboard box.

MXC, PRIZM MT and MTP is a registered trademark of US Conec, Ltd.
* Specifications are subject to change without notice

For more information contact our sales team at sales@sylex.sk