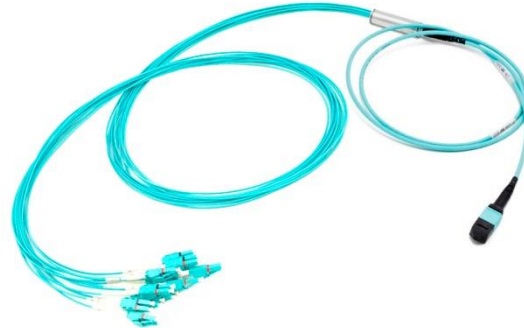


MTP CXP/CFP to 10xLCD SFP compact fanout

Basic characteristics

- ▲ 10x 10Gbit transmission over one cable
- ▲ Laser optimised MM bend insensitive fiber
- ▲ Uniboot LC connectors – reduction of cable bulk
- ▲ MTP® PRO connector optional



Temperature range

Indoor controlled environment (-10°C/+60°C)

Cable parameters

Jacket material	LSZH	
Cable construction	Round cable	
Outer diameter	3,8mm	
Fiber count	20	
Fiber type	MMF OM3/OM4	
Temperature range	operation:	-10°C to +70°C
	storage:	-25°C to +70°C
	installation:	-5°C to +50°C
CPR	Cca-s1a, d1, a1 B2ca-s1a, d1, a1	

Connector parameters

	MTP®/MTP® PRO	LC
Compliance	US CONEC standard	Telcordia GR-326
Colour of housing	Aqua/Magenta	Aqua/Magenta
Colour of boot	Black	White
Polish	Flat (PC)	Flat (PC)
Insertion Loss (acc. IEC 61300-3-4 method B)	<0,35dB (@850/1300nm)	<0,25dB (@850/1300nm)
Return Loss (acc. IEC 61300-3-6)	>20dB (@850/1300nm)	>30dB (@850/1300nm)

Identification

Traceability label with unique serial number on both ends of cable assembly.

Packaging

Each assembly in sealed PE bag, bulk pack in cardboard box. Longer lengths coiled on cardboard/wooden reel.

MTP is a registered trademark of US Conec, Ltd.
* Specifications are subject to change without notice

For more information contact our sales team at sales@sylex.sk