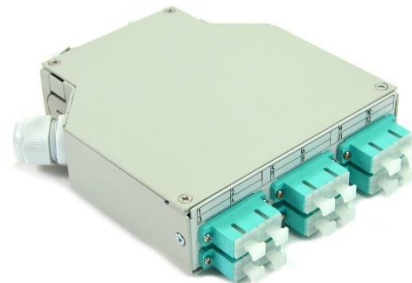


## SC Din Rail Box

### Basic characteristic

- ▲ Number of cable ports: 4
- ▲ Maximum cable diameter: 9 mm
- ▲ Available front plates
  - 4x SC simplex/duplex port
  - 6x SC simplex/duplex port
- ▲ Compatible with standard dimensions of DIN rail 35 x 24x 7,5 mm
- ▲ 3 variants available
  - Fully loaded with pigtails ready for splicing
  - With adapters
  - Empty



### Temperature range

Indoor controlled environment (-10°C/+60°C)

### Parameters

Dimensions	129 x 125 x 36 x mm
Material	powdered coating steel
Colour	light gray RAL7035
Capacity	up to 12 fibers/connectors
Cable entry port	1x PG11, 3x PG11 screw plug or other variants
Fixation methode	Din Rail Snap-on holder
Insertion Loss (acc. IEC 61300-3-4 method B)	<0,25dB (@1310/1550nm) <0,25dB (@850/1300nm)
Return Loss (acc. IEC 61300-3-6)	>50dB (UPC)/>60dB (APC) (@1310/1550nm) >30dB (@850/1300nm)

### Identification

Label with unique serial number.

### Packaging

Each Din Rail Box in cardboard box, bulk pack in master cardboard box.

\* Specifications are subject to change without notice

For more information contact our sales team at [sales@sylex.sk](mailto:sales@sylex.sk)