

**LC DUPLEX ADAPTER**  
(with flange, SC footprint)

**LC DUPLEX ADAPTER**  
(no flange, RJ45 footprint)

**LC DUPLEX ADAPTER**  
(no flange, SC footprint)

**LC SIMPLEX ADAPTER**  
(no flange, RJ45 footprint)

**LC QUAD ADAPTER**  
(with flange, SC footprint)

**LC QUAD ADAPTER**  
(no flange, SC footprint)

MOUNTING HOLE DIMENSIONS  
(INFORMATIVE REFERENCE)

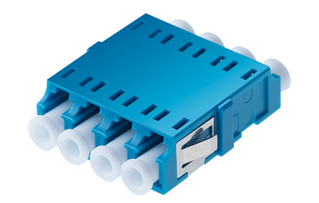
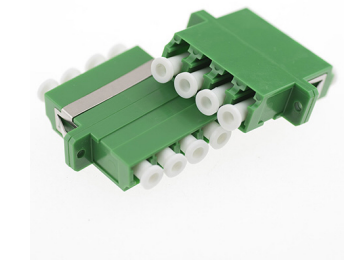
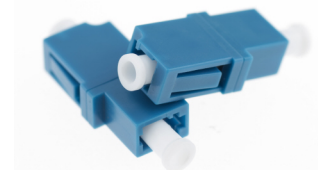
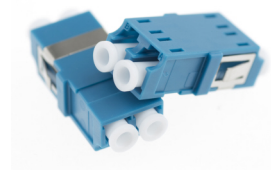
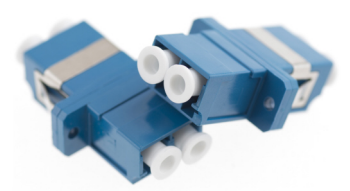
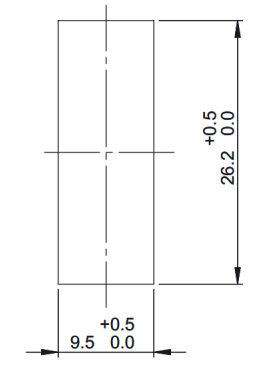
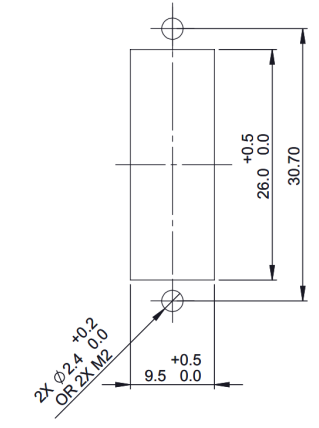
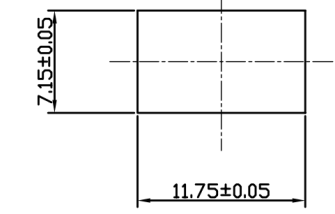
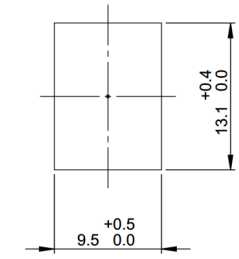
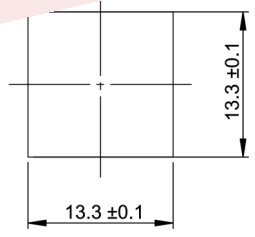
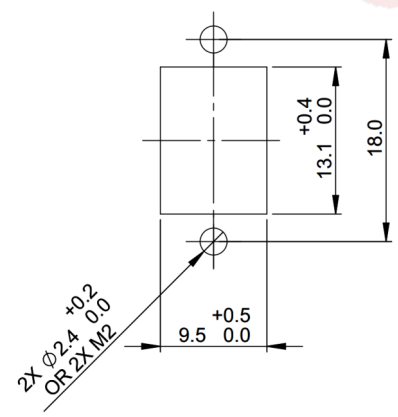
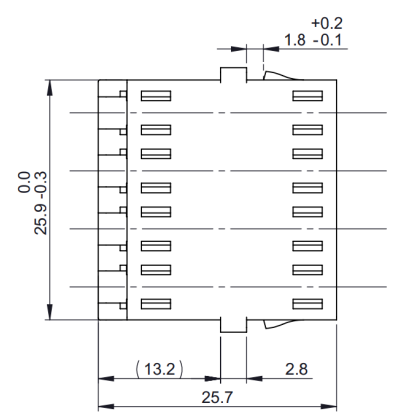
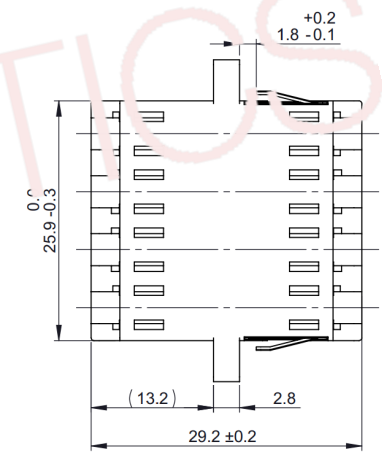
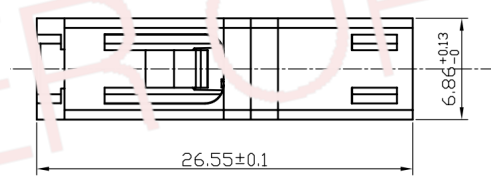
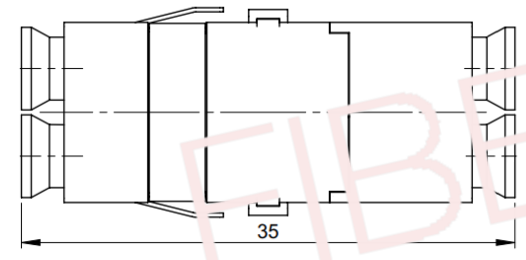
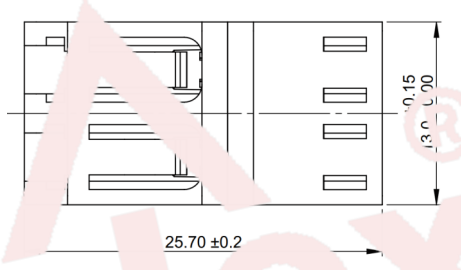
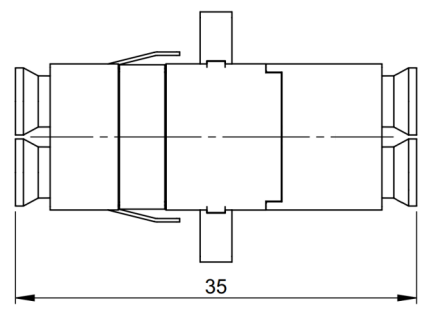
MOUNTING HOLE DIMENSIONS  
(INFORMATIVE REFERENCE)

MOUNTING HOLE DIMENSIONS  
(INFORMATIVE REFERENCE)

MOUNTING HOLE DIMENSIONS  
(INFORMATIVE REFERENCE)

MOUNTING HOLE DIMENSIONS  
(INFORMATIVE REFERENCE)

MOUNTING HOLE DIMENSIONS  
(INFORMATIVE REFERENCE)



**ORDERING CODE**

**AXLC-XXX-NXN**

- W w FLANGE, O w/o FLANGE
- S SC FOOTPRINT, R RJ45
- AQ AQUA, GR GREEN, BE BEIGE, MA MAGENTA, BU BLUE, \*
- LC LC
- S SIMPEX, D DUPLEX, Q QUAD
- A ADAPTER
- \* OTHER TYPES ON REQUEST

REVISION-DATE: A - 04.06.2019	CHANGE:	DRAWN BY, DATE: M.Ruzbarsky 2019/06/04	TITLE: <b>LC ADAPTERS</b>		
New drawing		CHECKED BY, DATE: Pavlov/Matúš	PRODUCT SPECIFICATION: -		
REVISION-DATE:	CHANGE:	APPROVED BY, DATE: I.Brestovanská	DIMENSIONS IN MM UNLESS SPECIFIED	SCALE: NO SCALE	
REVISION-DATE: X - DD.MM.YYYY	CHANGE:	PRODUCT NUMBER: AXLC-XXX-NXN	DRAWING NUMBER: 1-S-7451_1_A	SHEET NO. 1 of 1	
		THIS DRAWING CONTAINS INFORMATION THAT IS PROPRIETARY TO SYLEX s.r.o AND ANY USE WITHOUT PRIOR WRITTEN PERMISSION IS PROHIBITED			SIZE A3