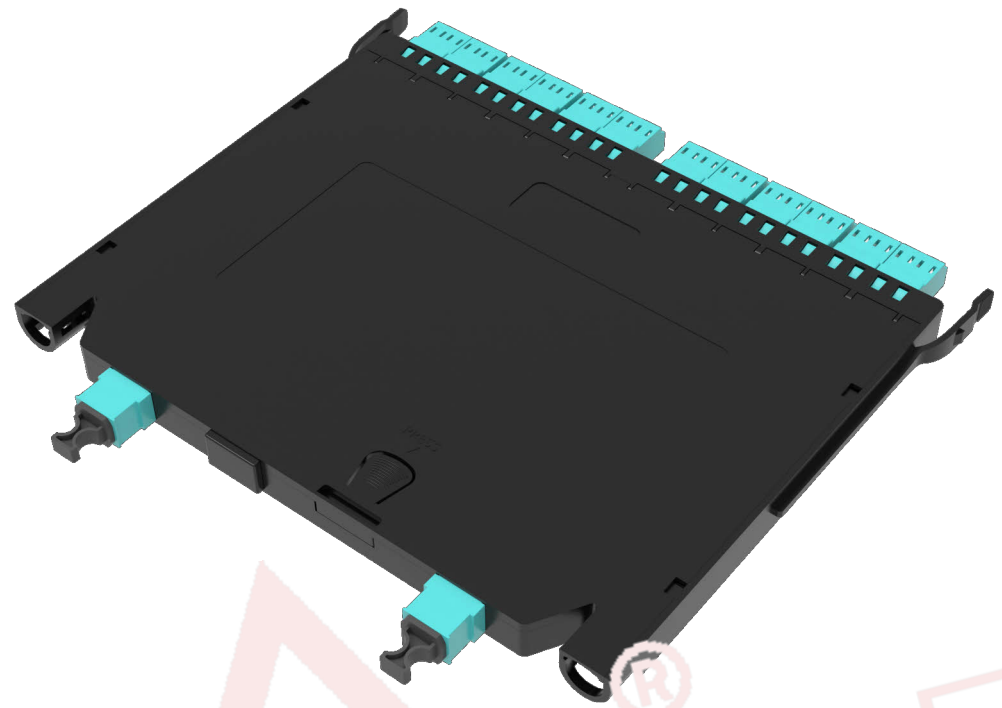
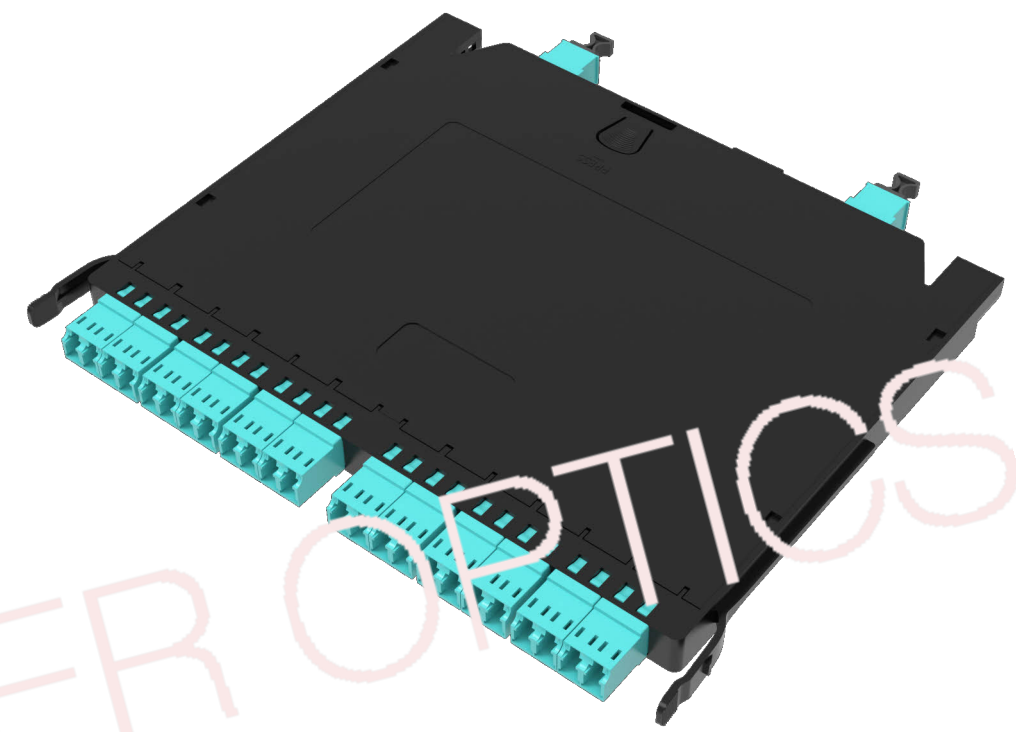


REAR VIEW



FRONT VIEW



sylex

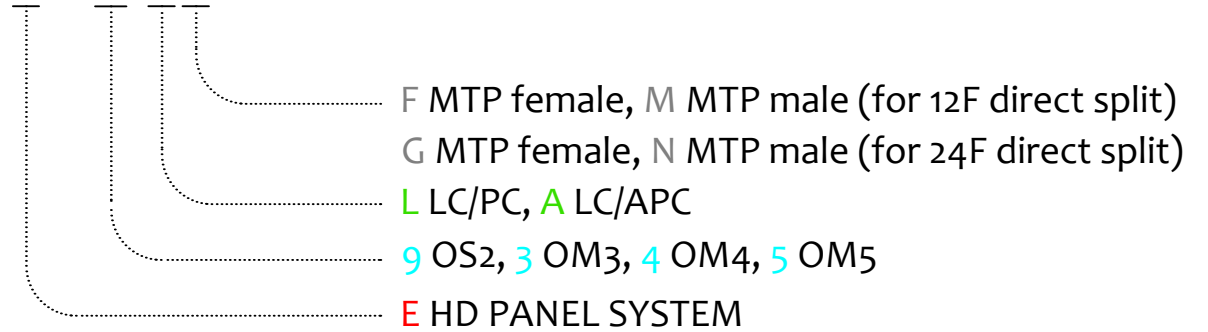
FIBER OPTICS

ADAPTERS COLOUR

MODE	MTP	LC
OS2	GREEN	BLUE
OS2-APC	GREEN	GREEN
OM3	AQUA	AQUA
OM4	MAGENTA	MAGENTA
OM5	LIME	LIME

ORDERING CODE

E24X-XX2-BLH



NOTES:

1 - OM3, OM4: IL<0.6dB AT 850nm AND 1300nm - CHANNEL VALUE ACCORDING IEC 61280-4-1 ONE-CORD REFERENCE METHOD

RL>19.6dB AT 850nm AND 1300nm - CHANNEL GUARANTEED VALUE

OS2: IL<0.75dB (MTP 10N spring) AT 1310nm AND 1550nm - CHANNEL VALUE ACCORDING IEC 61280-4-1 ONE-CORD REFERENCE METH.

IL<0.6dB (MTP 20N spring) AT 1310nm AND 1550nm - CHANNEL VALUE ACCORDING IEC 61280-4-1 ONE-CORD REFERENCE METH.

RL>47B (UPC) AT 1310nm AND 1550nm - CHANNEL GUARANTEED VALUE

RL>49.6B (APC) AT 1310nm AND 1550nm - CHANNEL GUARANTEED VALUE

VISUAL ASPECT CHECK ACCORDING TO IEC 61300-3-35

END FACE GEOMETRY ACCORDING TO TELCORDIA GR-326 (Singlefiber connector)

END FACE GEOMETRY ACCORDING TO IEC 61755-3-31 (Multifiber connector - APC polished)

END FACE GEOMETRY ACCORDING TO IEC 63267-3-31 (Multifiber connector - FLAT polished)

2 - SYLEX-SX-O LABEL ON PRODUCT PACKAGING AND MASTER CARDBOARD BOX

3 - CUMULATIVE TEST REPORT OF MEASURED IL AND RL VALUES SENT ON DEMAND IN ELECTRONIC FORM

REVISION-DATE: A - 25.10.2022	CHANGE:	DRAWN BY, DATE: J.Špilár 2022/10/25	TITLE: VERTEX		
NEW DRAWING		CHECKED BY, DATE: L.Miskerik 2022/10/25	2x12f MTP to 12xLC duplex module		
REVISION-DATE:	CHANGE:	APPROVED BY, DATE: Matus/Smelh. 2022/10/25	PRODUCT SPECIFICATION: -	DIMENSIONS IN MM UNLESS SPECIFIED	SCALE: NO SCALE
	CHANGE:	PRODUCT NUMBER: E24X-XX2-BLH-X	DRAWING NUMBER: 1-W-9165_1_A	SHEET NO. 1 of 1	
		THIS DRAWING CONTAINS INFORMATION THAT IS PROPRIETARY TO SYLEX s.r.o AND ANY USE WITHOUT PRIOR WRITTEN PERMISSION IS PROHIBITED			SIZE A3